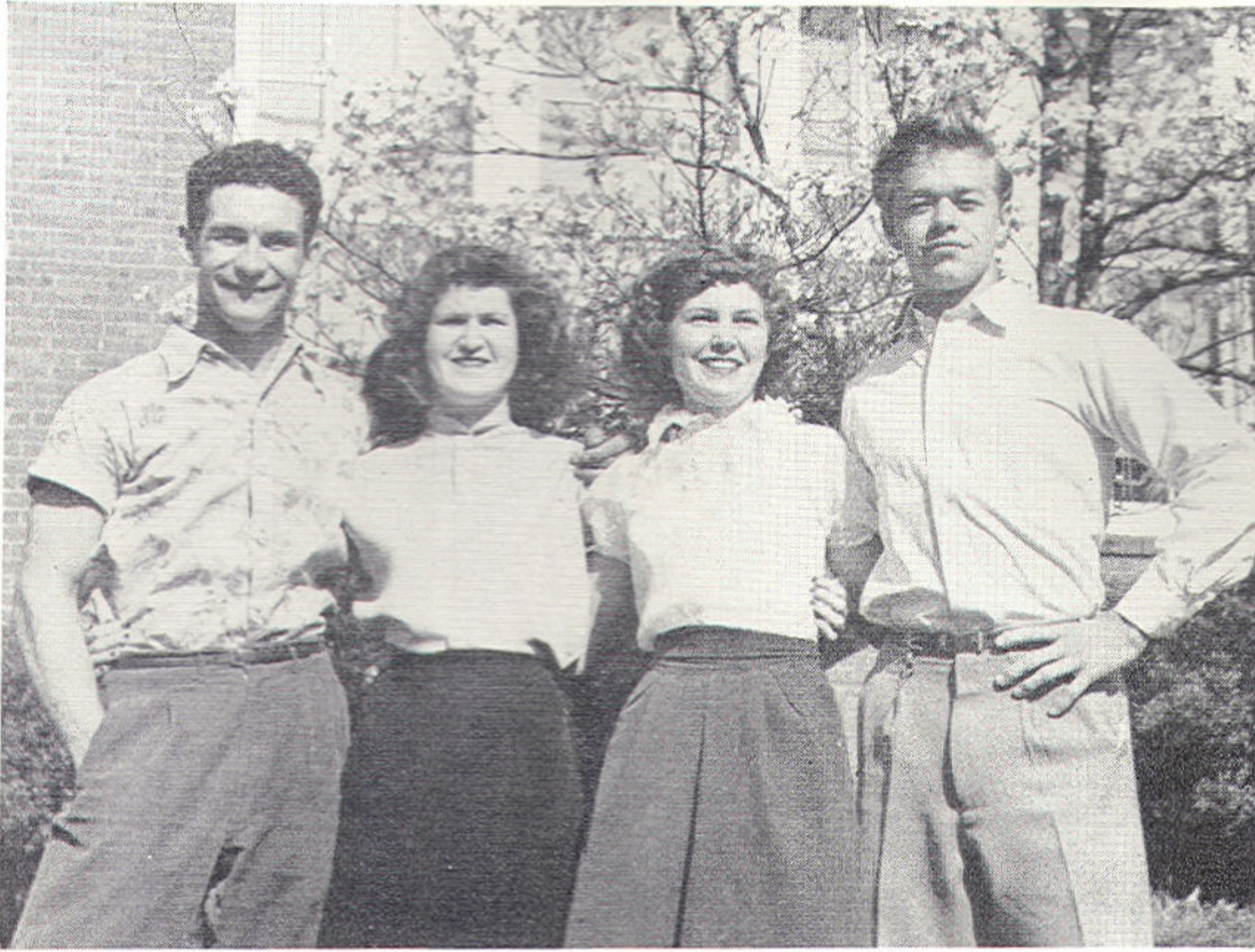


The Class of 1951 Our Officers



SENIOR CLASS OFFICERS

Right to left: Charles Bass, Treasurer; Margaret Wharam, Secretary; Gladys Hasty, Vice President; Mickey Riggs, President.

Our Sponsor



MISS BYRD

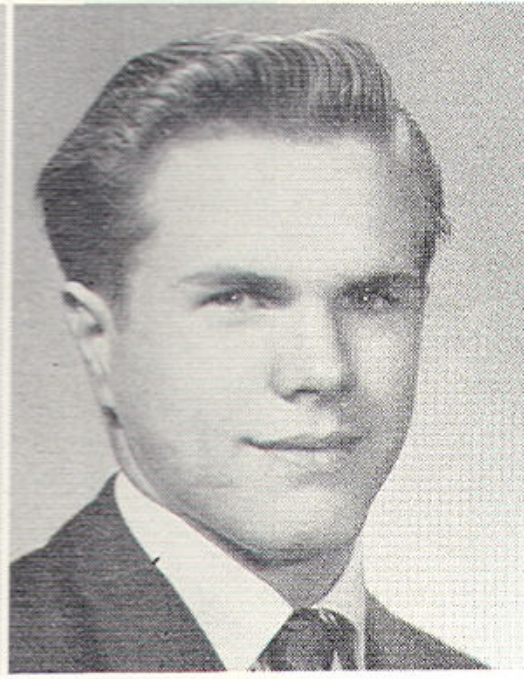
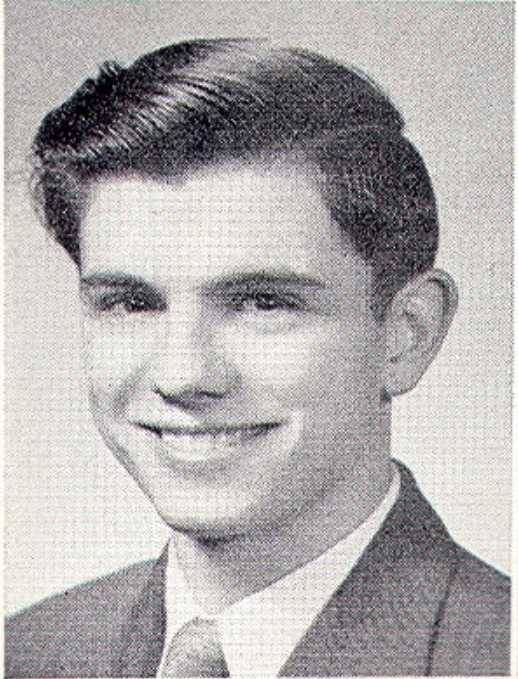
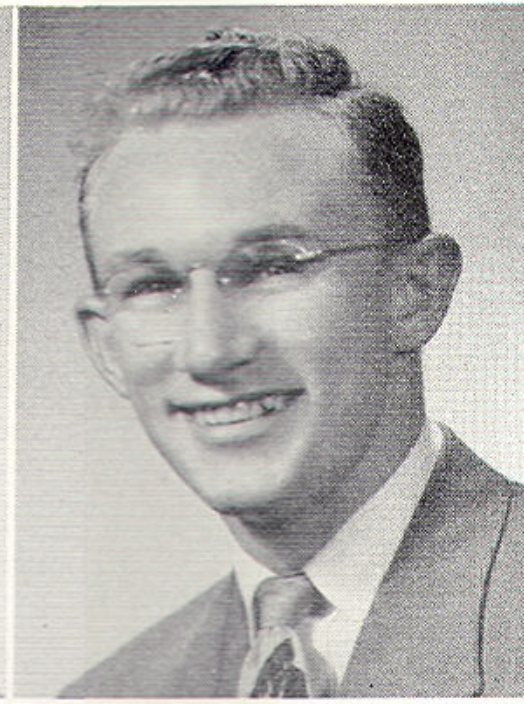
Our Spirit . . .



SENIOR CLASS COLORS: Blue and White.

SENIOR CLASS MOTTO: Mighty Among The Masses.

SENIOR CLASS FLOWER: Carnation (blue and white).



CHARLEY BASS—Bus Conductor 1 yr., Traffic Committee 1 yr., J. V. Football 1 yr., Wrestling Team 2 yrs. (Alternate Captain 1 yr.), Bible Club 1 yr., Admirals Hi-Y 2 yrs., Varsity Football 1 yr., Treasurer of the Senior Class 1 yr.

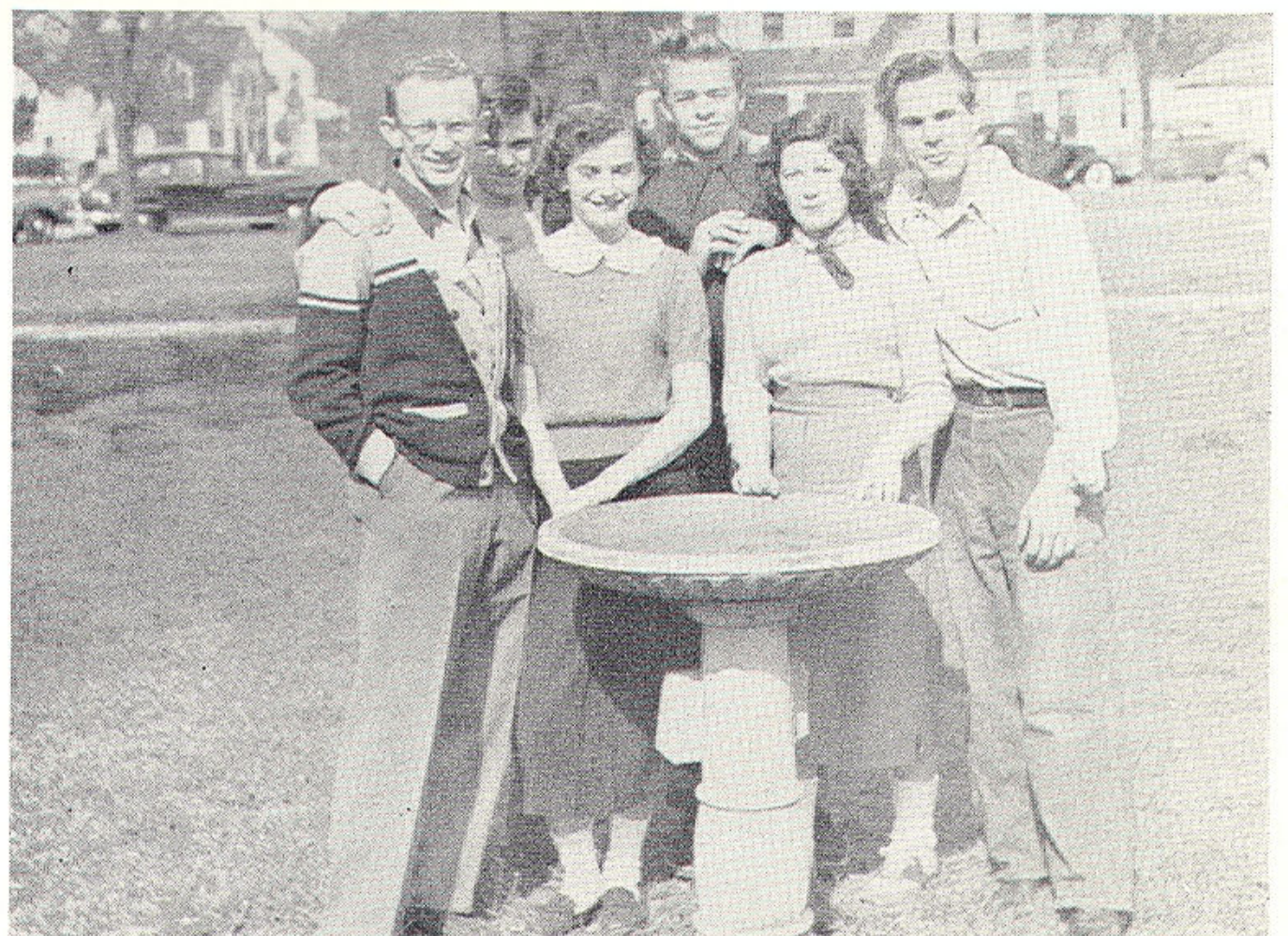
AVIS GLENDA BAILEY—Basketball 2 yrs., Dramatic Club 2 yrs., Science Club 1 yr., Majorette 1 yr., F. H. A. Club 2 yrs., Latin Club 1 yr., Beta Tri-Hi-Y 1 yr., Gamma Tri-Hi-Y 1 yr., Monogram Club 1 yr., Annual Staff 1 yr., Office Assistant 1 yr.

EUGENE E. BRICKHOUSE—Art Club 3 yrs., Library Club 2 yrs. (Vice President 1 yr.), Captains Hi-Y 1 yr., D. E. Club 1 yr., Annual Staff 1 yr., Monogram Club 4 yrs., Wrestling Team 1 yr., Track Team 2 yrs., J. V. Football Team 1 yr., Varsity Football 2 yrs.

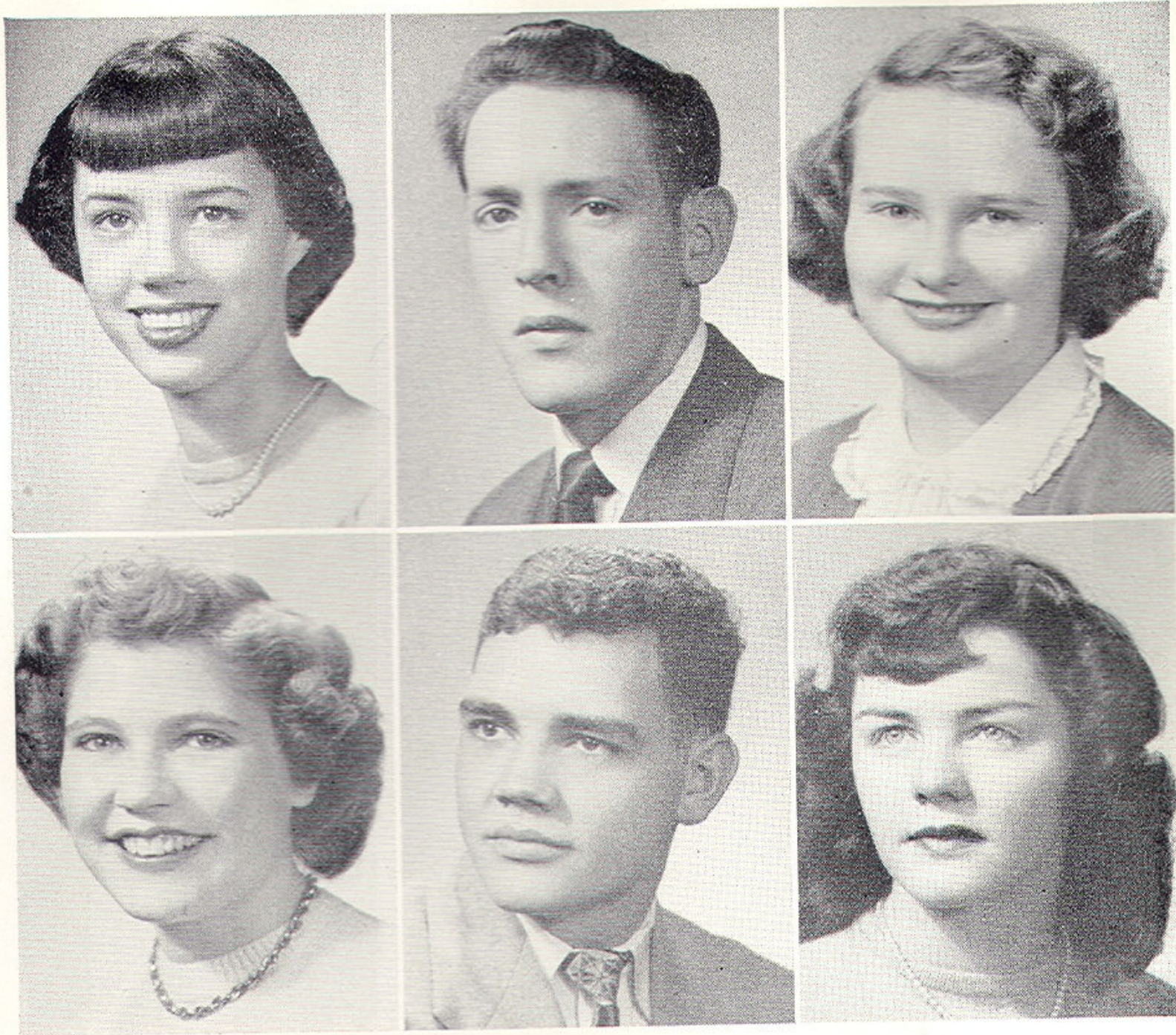
NICHOLA SAM CARDEMONE—President S. C. A. 1 yr., Photographic Editor of the Annual 1 yr., Photography Club 1 yr., Library Club 1 yr., Traffic Committee 1 yr., Band 1 yr., Honor Council 1 yr., Presidents Club 1 yr.

BETTY BEAL—Home Ec. Club 1 yr., D. E. Club 1 yr.

LEO CHAMPION—Chorus 1 yr., Varsity Football 1 yr.



Gene, Betty, Charlie, Glenda, Leo



BETSY SCOTT DAUGHERTY—1 yr. Art Club, Varsity Cheerleader, 1 yr., Assistant Editor of Annual, Co-Club Editor of Shipmate, Senior Representative of Student Council 1 yr., Gamma Tri-Hi 2 yrs., 1 yr. (Sergeant at Arms), Monogram Club 1 yr.

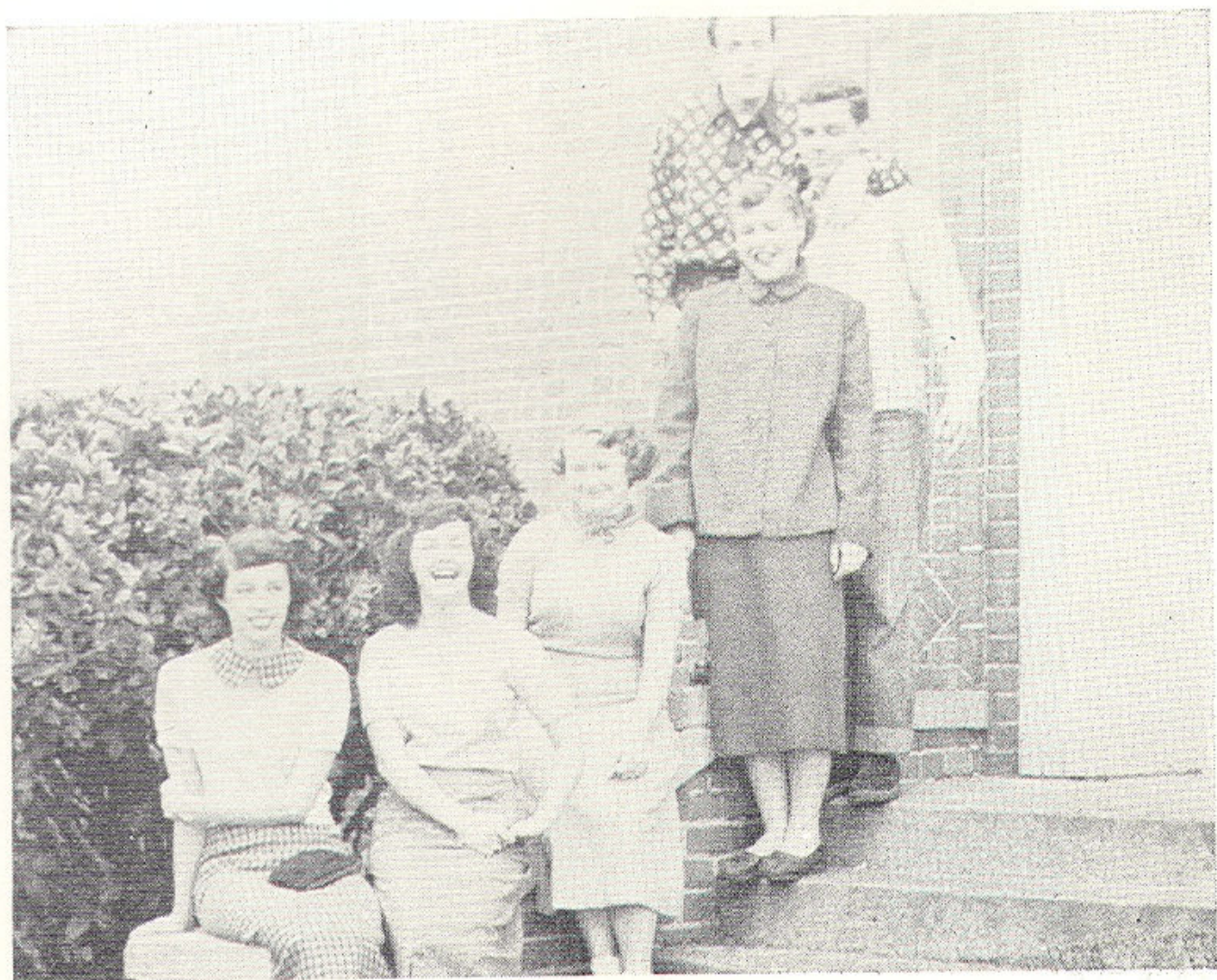
CHARLES CLARK—D. E. Club (Vice President).

DOROTHY ANN EVERETT—Glee Club 2 yrs., Tri-Hi-Y 1 yr., Latin Club 2 yrs.

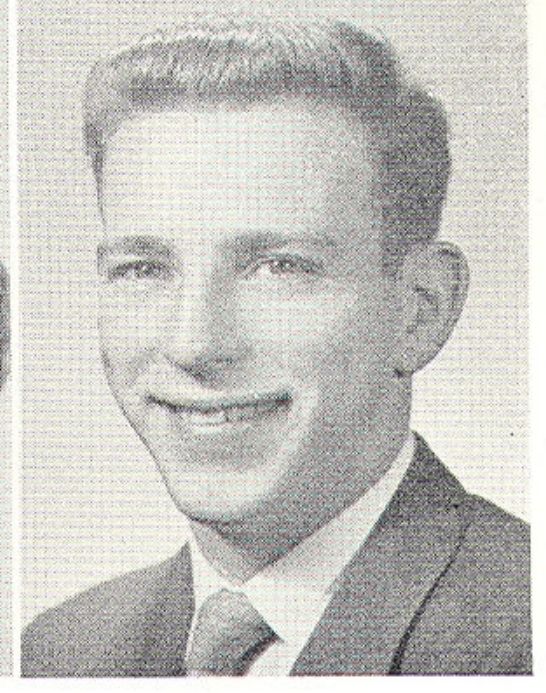
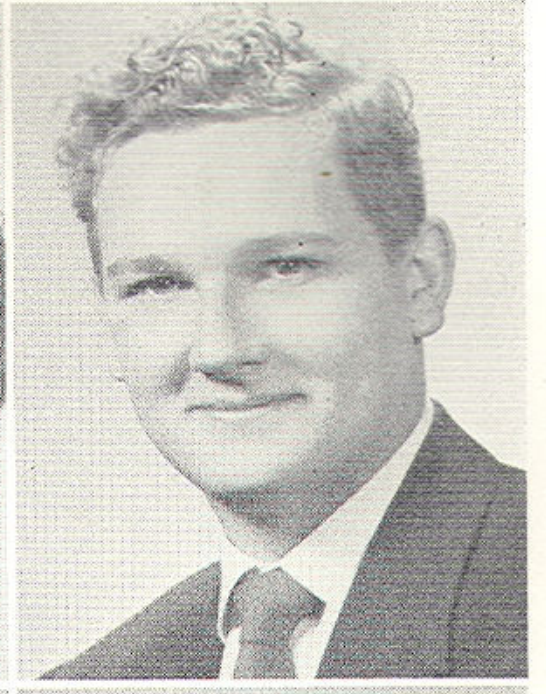
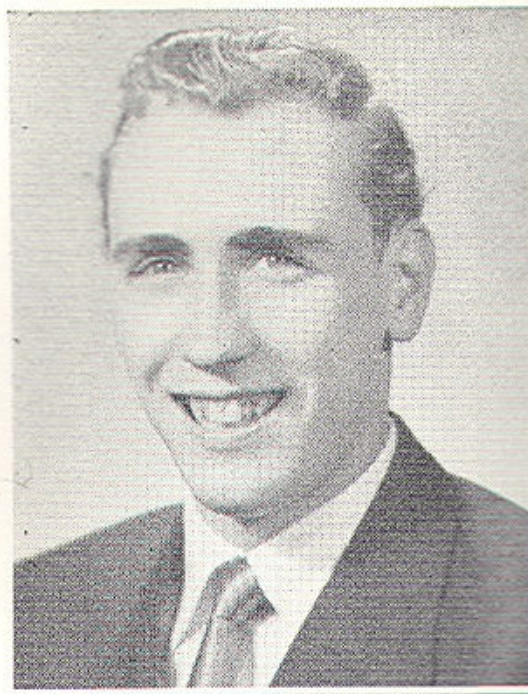
CAROLYN MARIE DEAN—F. H. A. 1 yr. (Sergeant at Arms), Headline Editor of Shipmate 1 yr., Circulation Manager of Annual 1 yr., Gamma Tri-Hi-Y 1 yr., S. C. A. representative 1 yr., Office Assistant 1 yr., Spanish Club 1 yr.

LOWELL DICKERSON—D. E. Club 1 yr.

BILLIE ROSALIE FOXWELL—Assistant Editor of Shipmate 1 yr., Editor in Chief 1 yr., Majorette 2 yrs., Gamma Tri-Hi-Y 2 yrs., Sergeant at Arms 1 yr., Vice President of Junior Class 1 yr., Monogram Club 2 yrs., Presidents Club 1 yr., Literary Club 1 yr.



Betsy, Billie, Dorothy, Carolyn, Lowell, Charles



JACK HOLROYD EDMONDS—Freshman and Sophomore basketball team 2 yrs., band 5 yrs., Monogram Club 3 yrs., Science Club 1 yr., Varsity Football 1 yr., Varsity Basketball 3 yrs. (Captain 1 yr.), Admirals Hi-Y 3 yrs. (President 1 yr.), D. E. Club 1 yr., Presidents Club 1 yr., Honor Council 1 yr.

GLADYS HASTY—D. E. Club 1 yr., Vice President Senior Class 1 yr.

VERNON ENGLAND—J. V. Football 1 yr., Varsity Football 3 yrs., Wrestling Team 1 yr., Monogram Club 2 yrs., Hi-Y 1 yr.

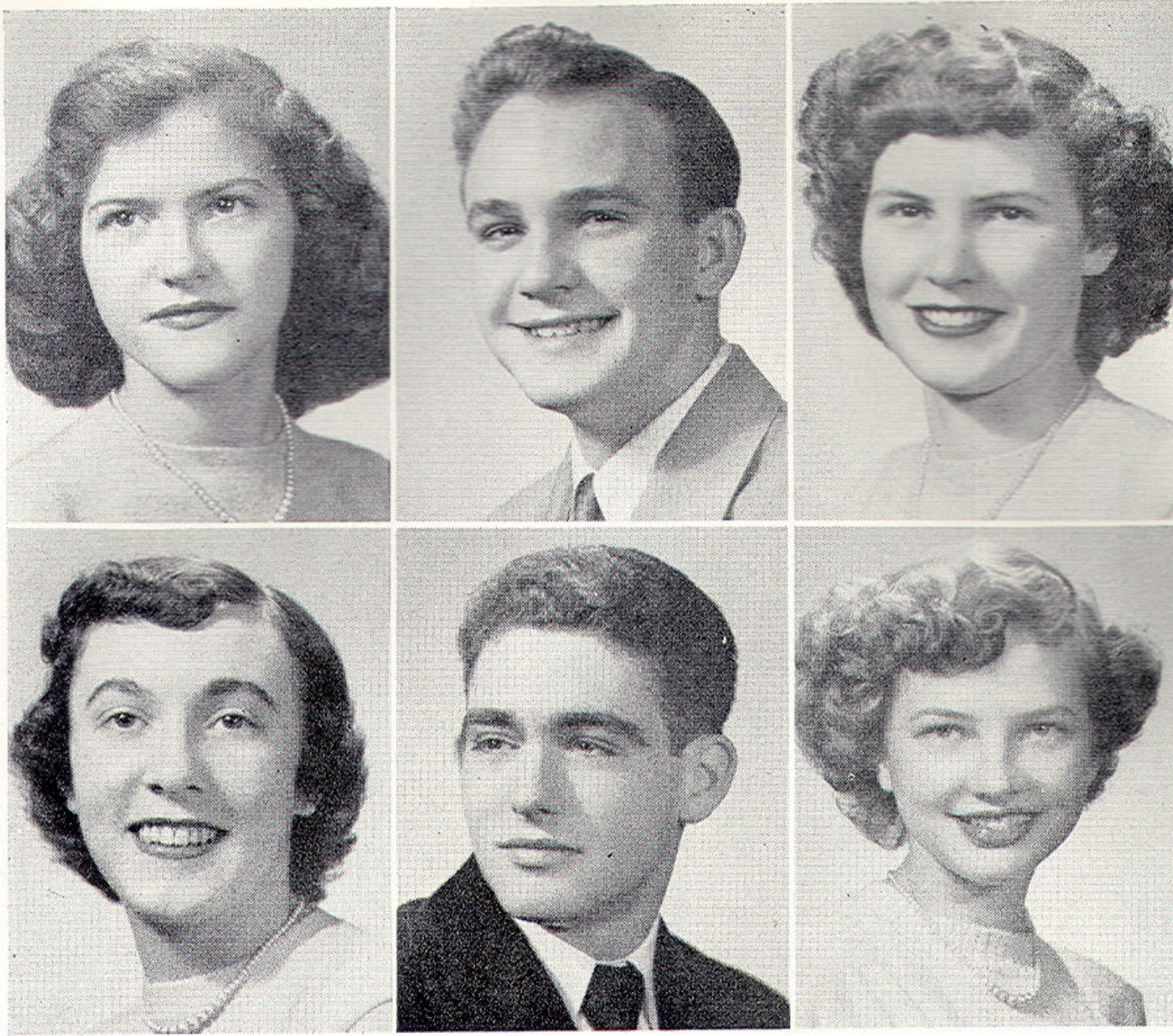
THOMAS KINCAID—Admirals Hi-Y 3 yrs., Monogram Club 3 yrs., J. V. Football 2 yrs., J. V. Basketball 1 yr., Track Team 1 yr., Tennis Team 1 yr., Varsity Basketball 3 yrs. (Captain 1 yr.), Traffic Committee 2 yrs.

LYDIA LYNEAR KENRICK—Glee Club 2 yrs., F. H. A. 1 yr. (Vice President).

ROBERT C. KNAGGS—J. V. Football 1 yr., Varsity Football 3 yrs. (Captain 1 yr.), J. V. Basketball 1 yr., Varsity Basketball 1 yr., Track 3 yrs., Monogram Club 4 yrs., Hi-Y 4 yrs. (Vice-President 1 yr.), Glee Club 2 yrs., Sports Editor of Shipmate 1 yr., Sports Editor of Annual 1 yr.



Tommy, Gladys, Robert, Jack, Gladys, Vernon



SONYA LEE RAIKE—D. E. Club 1 yr.

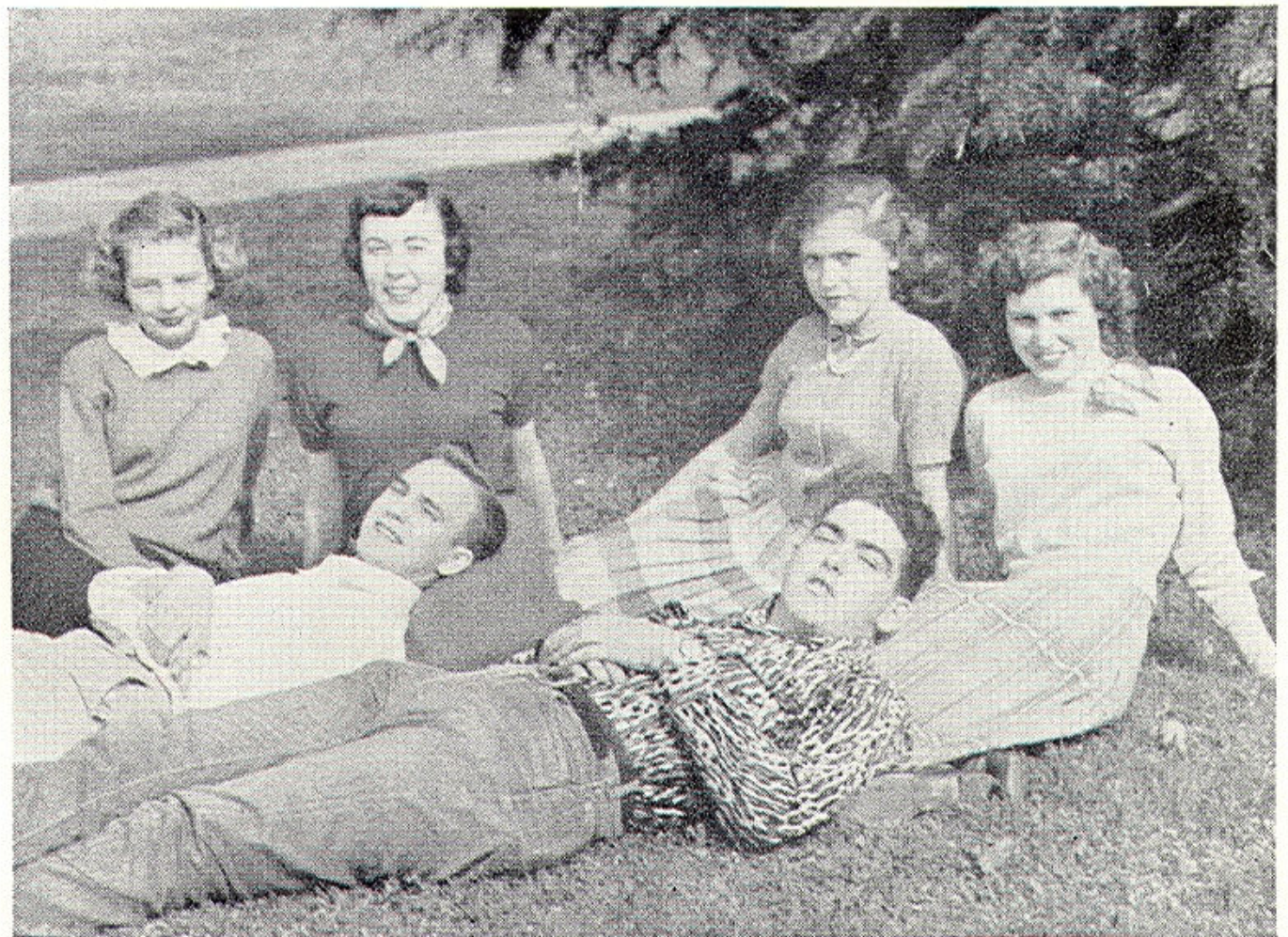
LEWIS ELWOOD RARY—D. E. Club 1 yr. (Secretary-Treasurer 1 yr.)

MARGARET RASNICK—Secretary of Freshman Class 1 yr., Tri-Hi-Y 1 yr., Home Economics Club 1 yr., Library Club 2 yrs. (President 1 yr.), D. E. Club 1 yr., Circulation Manager of Shipmate 2 yrs., Secretary and Treasurer of Junior Class 1 yr., Secretary of Senior Class 1 yr., Presidents Club 2 yrs. (Secretary and Treasurer 1 yr.), Club Editor of the Annual 1 yr.

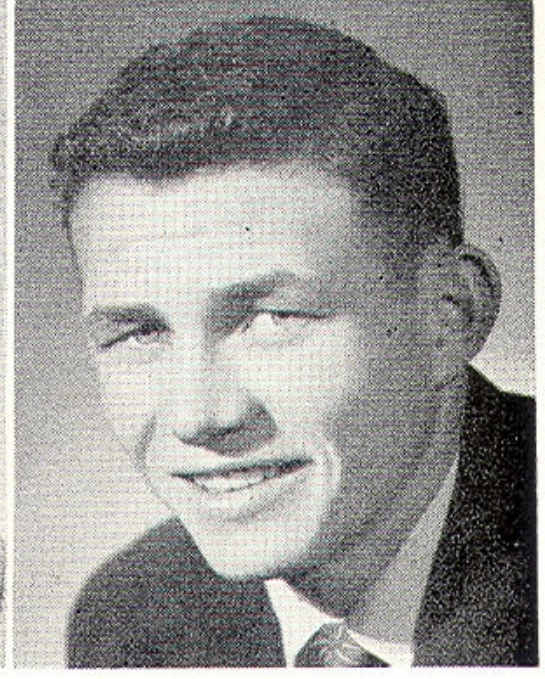
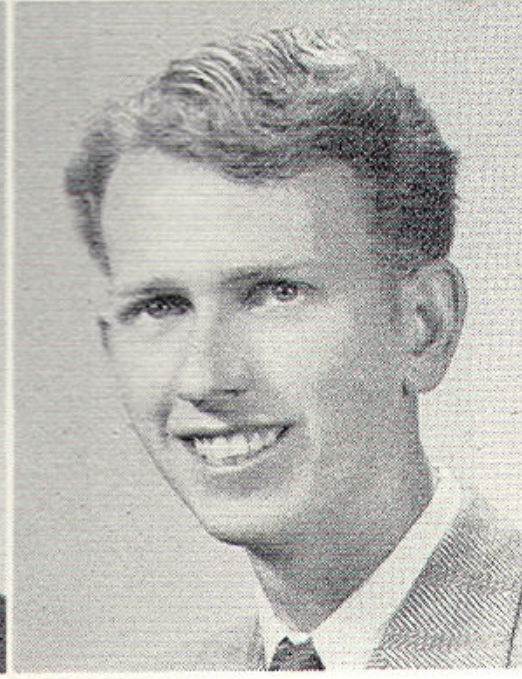
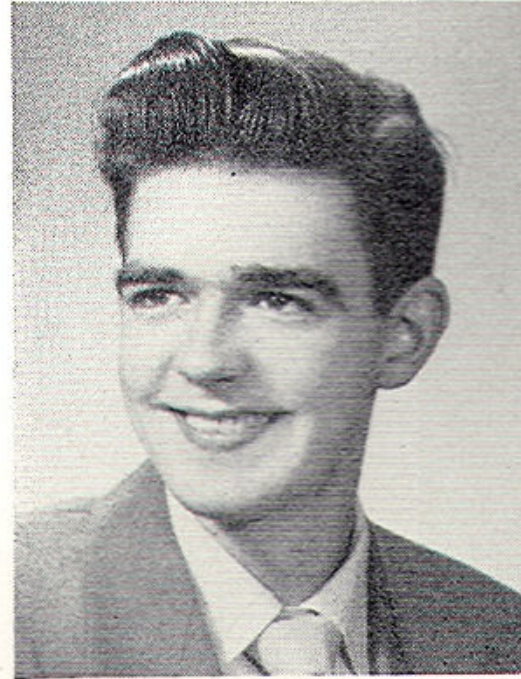
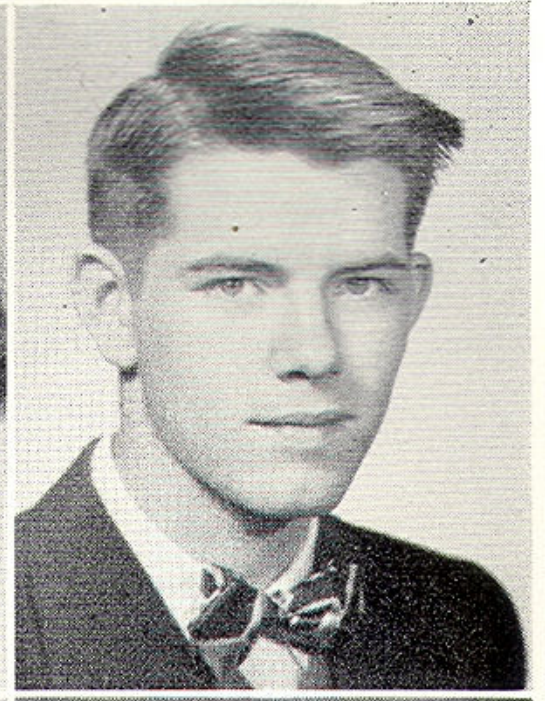
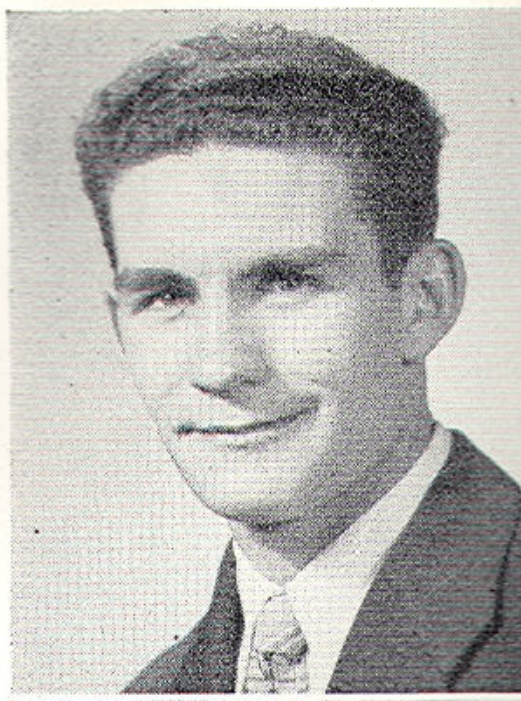
CAROL SMITH—Girls' Glee Club 2 yrs., Latin Club 1 yr., Dramatic Club 1 yr., Tri-Hi-Y 3 yrs. (Treasurer 1 yr.), Presidents Club 1 yr., Annual Editor 1 yr., Make-Up Editor of the Shipmate 1 yr., Varsity Cheerleader 1 yr., Monogram Club 1 yr.

HUBERT E. OWSLEY, JR.—Science Club 1 yr. (Vice-President 1 yr.), Monogram Club 2 yrs., J. V. Football 1 yr., Latin Club 1 yr., Varsity Football 1 yr.

DOROTHY L. THOMAS—Dramatic Club 1 yr., Literary Club 1 yr., Glee Club 1 yr., Art Club 1 yr., Kappa Tri-Hi-Y 1 yr. (President 1 yr.), Presidents Club 1 yr., Honor Council 1 yr.



Hubert, Elwood, Dottie, Carol, Sonya, Margaret



GARY ANDERSON (MICKEY) RIGGS—2 yrs., Track, 1 yr. Captain, 2 yrs., Varsity Football, 1 yr. (Captain), Junior Class S. C. A., Representative, Monogram Club 1 yr., Presidents Club 1 yr., Senior Class President, Glee Club 2 yrs., Hi-Y 2 yrs. (1 yr. Secretary).

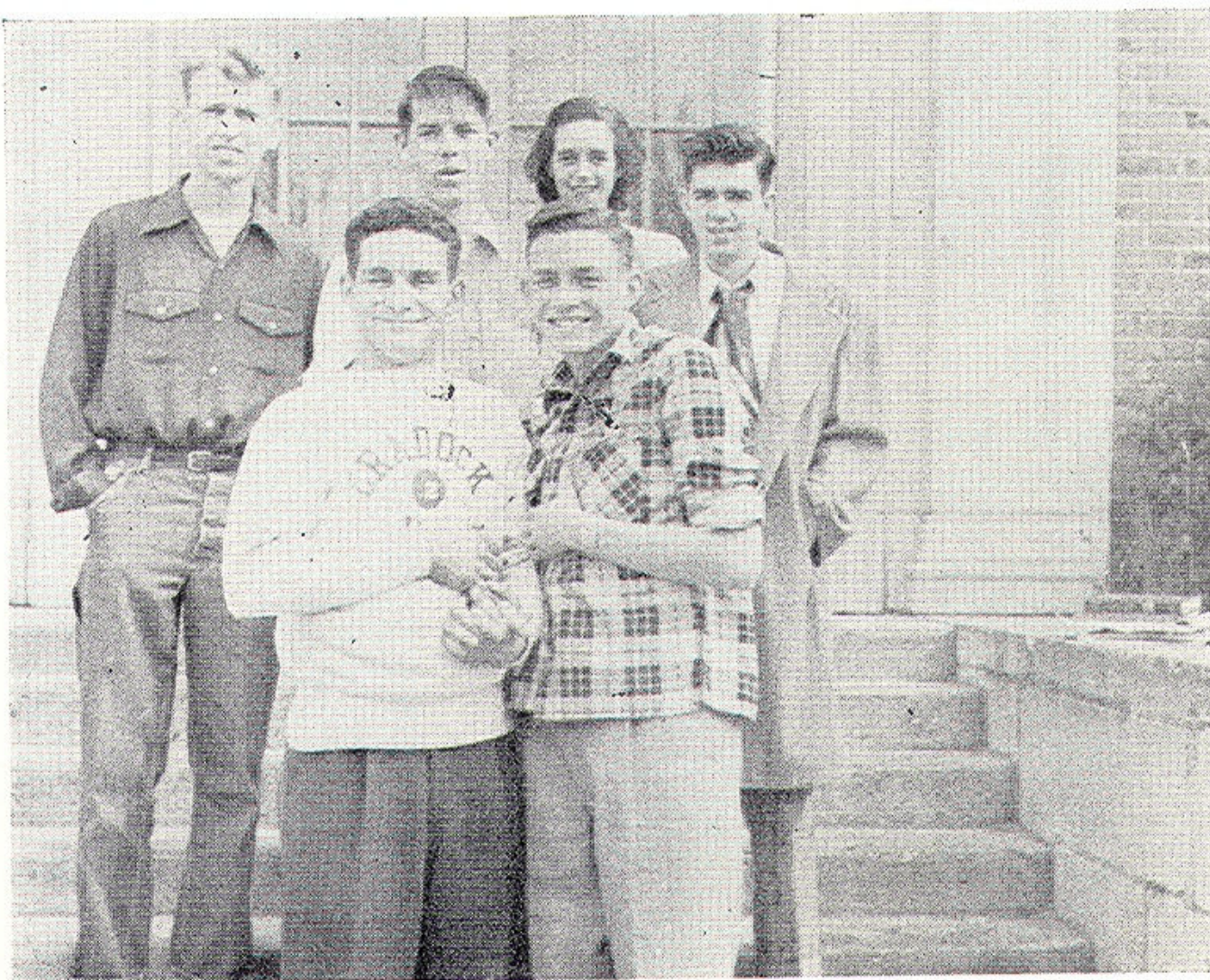
VIVIAN LEE WRIGHT—Tri-Hi-Y 2 yrs., Advertising Manager of Annual, Shipmate Staff 1 yr., F. H. A. 1 yr., Girls Softball 1 yr..

RODNEY TURNER—President of Science Club 2 yrs., Presidents Club 2 yrs., Glee Club 1 yr.

CHARLES RICHARD VICK—Captains Hi-Y 1 yr., D. E. Club (1 yr. President), Presidents Club 1 yr., Bus Conductor 3 yrs.

FRANKLIN D. WALLACE—J. V. Basketball 1 yr., Glee Club 1 yr.

MAURY WILSON WHITE—Presidents Club 1 yr., Monogram Club 3 yrs. (President 1 yr.), Admirals Hi-Y 3 yrs., Glee Club 3 yrs., Art Club 1 yr., Track 3 yrs. (Captain 1 yr.), Varsity Football 2 yrs., J. V. Football 2 yrs., Freshman Basketball Team 1 yr., Bus Driver 1 yr., Wrestling 1 yr.



Mickey, Maury, Frank, Rodney, Vivian, Charles